

# We partner with you for the life of your system.



Molex Premise Networks customers and Certified Installers receive extensive training in our New York, Los Angeles, Chicago, and Dallas training centers.

As part of the second largest interconnection product manufacturer in the world, Molex Premise Networks is committed to delivering innovative voice, audio and data communications solutions that safeguard the integrity of your data. To do this, we align ourselves with cabling and installation partners who offer the highest quality products

and services. Then we provide intensive training that ensures they understand how our structured cabling products can best serve your company. Regardless of the Molex Premise Networks products you choose, expect flawless performance throughout the life of your system. And count on us to be there to support you every step of the way.



A highly-skilled Molex Premise Networks Certified Installer will field-test your system to ensure it's properly constructed to meet your networking requirements.

Molex Premise Networks provides free system design support, including Visio drawings, material lists, and CAD product drawings.



**Molex Premise Networks Division**  
**Corporate Headquarters**  
8 Executive Drive  
Nashua, NH 03051 USA  
Ph: 603-324-0200  
Toll Free: 800-866-3827  
Fax: 978-772-2011  
www.molex.com

**Latin America**  
Tel 516 454 6700  
Fax 516 454 6705

**Western Europe Headquarters**  
Molex Premise Networks Limited  
Network House, Concorde Way  
Segensworth North, Fareham,  
Hampshire, PO15 5RL  
England  
Tel +44 (0) 1489 572 111  
Fax +44 (0) 1489 559106  
www.molexpn.co.uk

**Eastern Europe Headquarters**  
Molex Premise Networks S.P.Zo.o  
Ul. Nowelska 6  
Warsaw  
01-447  
Poland  
Tel +48 22 36 92 51  
Fax +48 22 36 92 55  
www.molexpn.com.pl

**Asia Headquarters**  
Molex Premise Networks Hong Kong  
2F, Block A Shatin Industrial Centre  
5-7 Yuen Shun Circuit  
Siu Lek Yuen, Shatin  
New Territories  
Hong Kong  
Tel +852 2637 3759  
Fax +852 2647 1082  
www.molexpn.com

**South Pacific Headquarters**  
Molex Premise Networks Australia Pty Ltd  
86-100 High Street  
Melton  
Victoria  
Australia 3337  
Tel +61 3 9747 8322  
Fax +61 3 9747 8627  
www.molexpn.com.au

The information in this document is subject to change without notice and should not be construed as a commitment by Molex Premise Networks. Molex Premise Networks assumes no responsibility for any errors that may appear in this document.

© Copyright 1999 Molex, Inc., Harvard, MA 01451 USA. Molex is a registered trademark of Molex, Inc. RICI is a registered trademark of Barnes Wentworth, Inc. Velcro is a registered trademark of Velcro USA. Printed in USA 0899. 218-130



MOLEX PREMISE NETWORKS COMMUNICATIONS CLOSET SOLUTIONS

With constant  
moves, adds  
and changes, you need  
communications closet solutions  
that ensure the integrity  
of your data.



# It's all about data integrity...

AT MOLEX PREMISE NETWORKS, PROVIDING COPPER AND FIBER SOLUTIONS THAT ENSURE DATA INTEGRITY IS OUR MISSION. OUR COMMITMENT TO THIS MISSION IS EVIDENT IN EVERY ASPECT OF OUR BUSINESS-FROM PRODUCT DESIGN TO TESTING TO EASE OF INSTALLATION TO CUSTOMER SUPPORT.

When you're in the market for structured cabling solutions, what do you look for? Electrical performance? Flexibility? Ease of installation? Customer support? Individually, all these issues are important. But its only collectively that they can differentiate a truly great cabling system solution that will safeguard your data long term. Because, without data integrity, nothing else matters.

WITH ALL THE CHANGES OCCURRING IN THE COMMUNICATIONS CLOSET, IT'S VITAL THAT YOU CHOOSE SOLUTIONS THAT ENSURE CONTINUING NETWORK PERFORMANCE IN THE FACE OF CONSTANT CHANGE.

Molex Premise Networks closet products are designed for maximum versatility to meet your ever-changing communications needs. For example, we not only make it very easy to move, add and change jacks, fiber connectors, patch panels and labels—we also focus on the integration of safeguards so that today's high performance cabling is handled properly change after change. Our ergonomically designed Ring Runs, Covers, and cable management products have been voted the best in the industry.

INNOVATIVE DESIGN AND ATTENTION TO DETAIL ENSURE SUPERIOR PERFORMANCE.

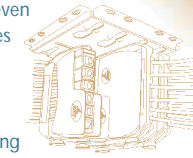
Molex Premise Networks products are engineered to exceed your expectations for performance, flexibility, and ease of installation, upgrades and changes. We believe it's our focus on innovation that makes our solutions remarkable. For example, our RJ-45 DataGate™ jack delivers increased flexibility in a wide variety of applications. It's engineered for use across a broad range of our product line and has the headroom required for today's bandwidth-hungry applications. To ensure a clean connection, the jack is configured with our innovative DataGate shutter. This automatic "gate" protects an unoccupied jack from dust and other contaminants while allowing for single-handed plug-ins and removal.

TOTAL SOLUTIONS FOR CAT 5, CAT 5E, THE NEW CAT 6, AND FIBER.

Network speeds are getting faster every day. To keep pace, you need to future-proof your network. Molex Premise Networks makes it easy. As your single source for high-performance copper and fiber structured cabling products, we have the products you need for virtually any application requirement. Our Cat 5, Cat 5e

### THE MINI CLOSET

Our unique and versatile RIC (Rapid Inter-Connect Interface), which can be mounted in the closet, above the ceiling, beneath the floor or even under a desk, provides a contamination-free consolidation point. This "mini distribution center" makes changing cabling infrastructure a snap because it allows you to reconfigure multiple channels simultaneously near the work group.

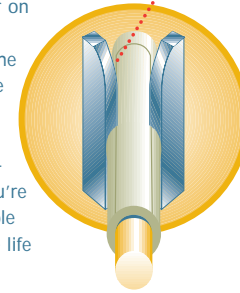


### INCREASE FIBER CONNECTION DENSITY

The FMS Plus is ideal when you need maximum fiber terminations in a minimum of rack space. These configurable patching and/or splicing units are available in seven styles to accommodate between 48 and 144 fibers. The units feature individual compartments for patching and splicing. Each FMS Plus unit is shipped completely assembled, including a configurable 6-Pak panel. You simply mount the unit on a rack and snap in 6-Pak Adapter Plates and splice trays (purchased separately).

### RETERMINATE WITHOUT TERMINATION FATIGUE

Our unique V-8 KATT connector termination has V-shaped contacts that flex—not fatigue—when terminated. It prevents wear and tear on the connector and protects the integrity of the connection through hundreds of reterminations. You're assured reliable service for the life of the system.



Molex Premise Networks' new PowerCat Plus IDC Patch Panels provide performance (to proposed Category 6) when configured with our PowerCat Plus jacks.



**A. Ring Run Panels** provide easy horizontal and vertical cable management and speed cable dressing during installation and changes. Smooth, ergonomic design protects wire from kinks.



**B. Ring Run Covers** provide a sleek, protected exterior for our 1U and 2U Ring Run Panels.



**C. Clear Rear Cable Management Trays** maintain proper cable bend radius requirements.



**D. Between-the-Rack Vertical Cable Managers** are an attractive, durable way to manage cable between racks.



**E. Heavy-duty, rack-mount Equipment Shelves** hold keyboards, monitors, and more.



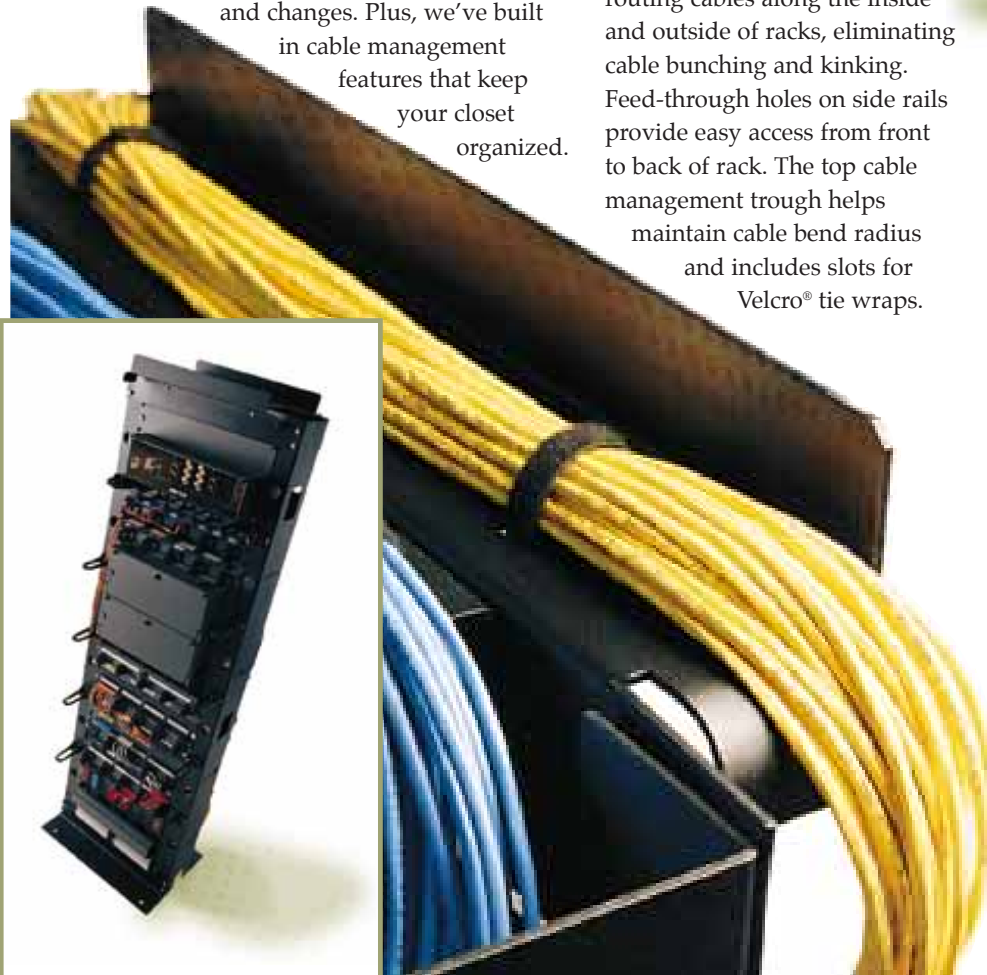
**F. 12-outlet, Rack-Mount Power Strip** provides electrical service to rack-mounted equipment plus an easily accessible 120VAC 15 AMP outlet with surge suppression.

# Our complete family of UTP closet products provides **superior** end-to-end performance and organization.

Whether you need communications closet products that support voice, audio or high-speed data applications, Molex Premise Networks can meet your every requirement. Our patch panels, premises distribution systems, racks, and cable management products are engineered to provide outstanding performance through hundreds of moves, adds, and changes. Plus, we've built in cable management features that keep your closet organized.

## OMEGA RACK—THE ULTIMATE IN CABLE MANAGEMENT.

The Omega Rack, which is compatible with both 19- and 23-inch panels and equipment, provides a sturdy, central location for communications cabling and equipment. Its increased side-rail depth allows extra space for routing cables along the inside and outside of racks, eliminating cable bunching and kinking. Feed-through holes on side rails provide easy access from front to back of rack. The top cable management trough helps maintain cable bend radius and includes slots for Velcro® tie wraps.



## IDC PATCH PANELS OFFER OUTSTANDING PERFORMANCE IN HIGH-DENSITY APPLICATIONS.

The 24-, 48- and 96-port, high-density IDC Patch Panels provide an easy way to cross-connect between trunk and horizontal cabling. On the back of the panels, rear cable management trays hold wires securely while our V-8 IDC KATT connectors allow wiring changes without damage to the panels. Easy-to-read front port labels simplify installation and maintenance of cabling systems. The panels exceed the performance specified by TSB-67 channel and basic link limits. They are Power Sum compliant for cleaner signals and reduced near-end crosstalk (NEXT), tested to 350MHz, and designed to eliminate short link resonance problems.

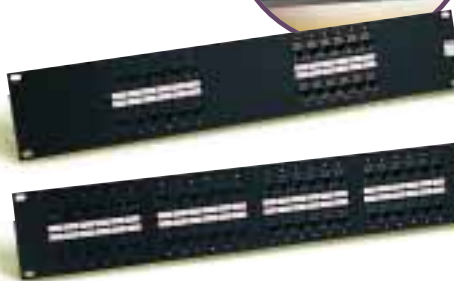


## PLUG-AND-PLAY EZ PATCH PANELS ENHANCE CLOSET ORGANIZATION AT A GLANCE.

Available in 24- and 48-port versions, the economical EZ Patch can be field configured with multi-colored DataGate jacks for either 568B or 568A wiring applications. A write-in label field is provided for each port. EZ Bar, an optional rear cable management panel, maintains proper cable bend radius.

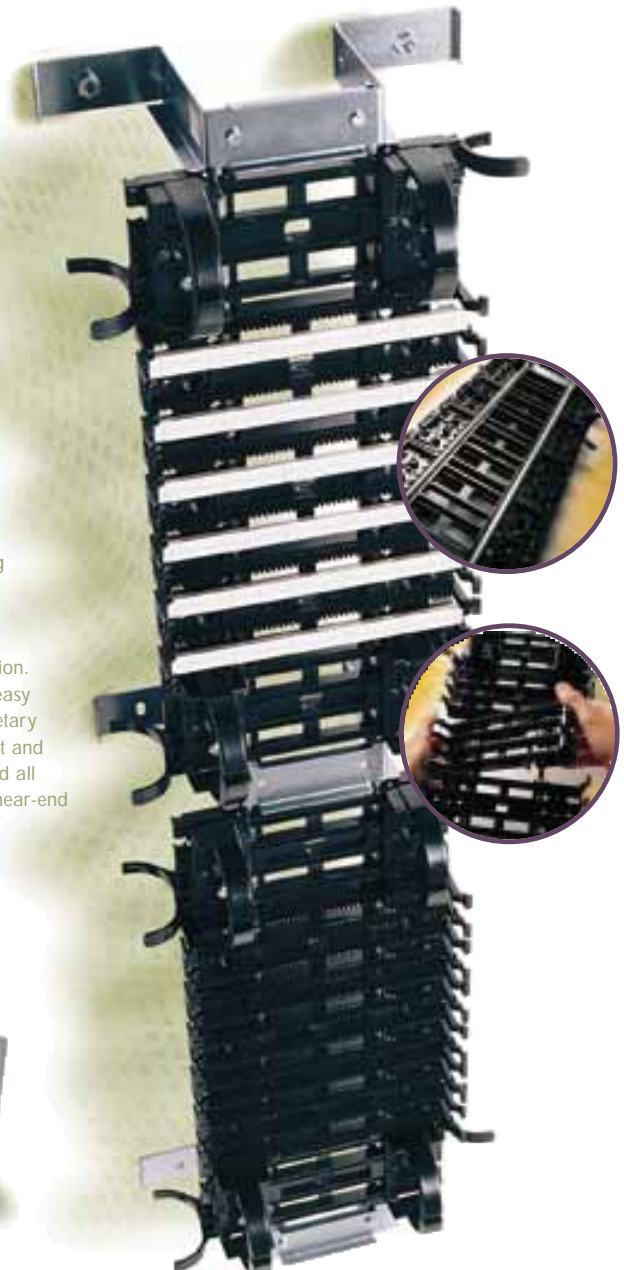
## CATEGORY 5 TELCO PATCH PANELS OFFER SIMPLICITY OF 25-PAIR FEEDER CABLES.

Our 24- and 48-port Category 5 Telco Patch Panels are the solution when you need to connect a 10/100BASE-T hub with RJ-21 Telco connectors to a patch panel in the wiring closet. These panels meet the Category 5 Power Sum requirements of 40dB NEXT @ 100 MHz—as specified by TIA/EIA - 568-A-while maintaining standard pair pin-outs (1-26, 2-27, etc.).



## FLEXIBLE WALL-MOUNT MODULAR DISTRIBUTION SYSTEM SPEEDS INSTALLATION.

Ideal for voice, audio and high-speed data applications, the modular XpressKATT™ Premises Distribution System dramatically cuts installation times—often by as much as 50 percent. XpressKATT poles and brackets go up fast with fewer screws. Optional horizontal mounting channels make section alignments virtually automatic. Bases and ring runs simply snap onto the poles and slide up or down to the desired position. Then, bases swing to either side for easy wire lacing. Plus, the system's proprietary ring design makes cable dressing fast and easy. KATT connectors meet or exceed all EIA/TIA performance standards for near-end crosstalk (NEXT) and attenuation-to-crosstalk ratio (ACR).



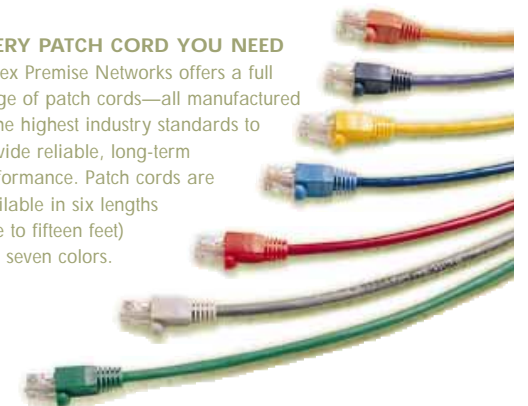
## FIELD TEST EQUIPMENT

The SLT3™ Tester provides instant identification of most common voice and data problems in USOC, 568A, or 568B cabling systems. The master and remote units separate for easy end-to-end testing of installed cabling. A continuously sequencing LED display immediately alerts you to shorts, opens, reversals and miswires in your cabling system. Simply snap and lock the units together for easy storage when not in use.



## EVERY PATCH CORD YOU NEED

Molex Premise Networks offers a full range of patch cords—all manufactured to the highest industry standards to provide reliable, long-term performance. Patch cords are available in six lengths (one to fifteen feet) and seven colors.



It's all about data integrity.

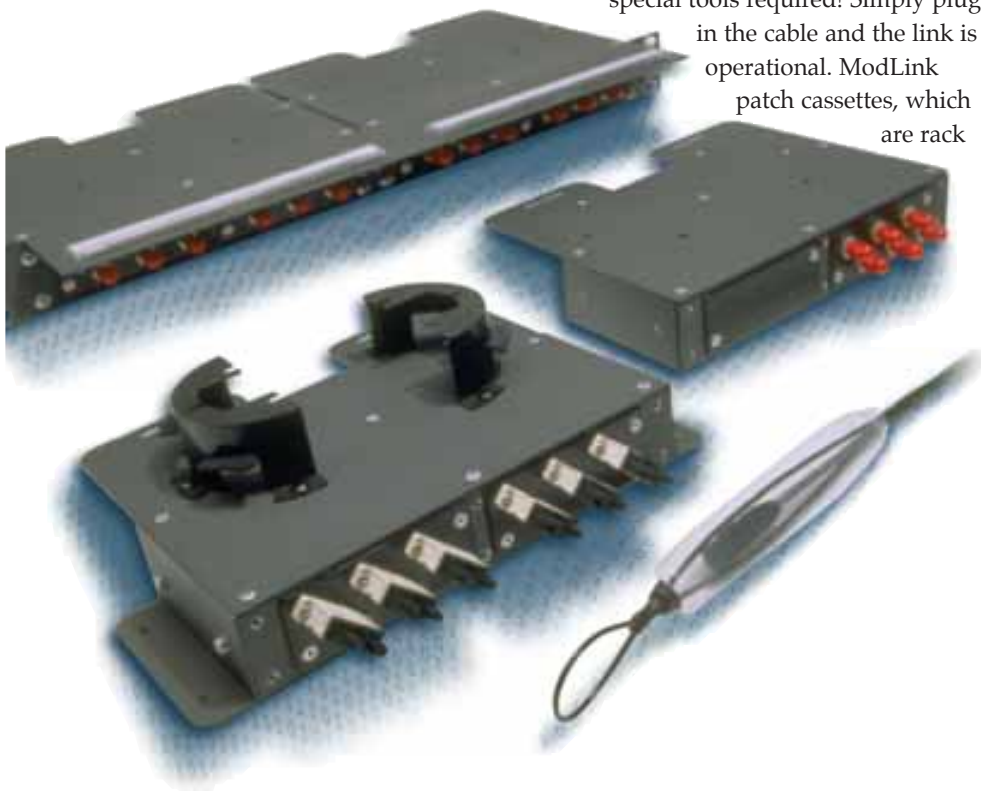
# Expect outstanding optical performance and long-term reliability from our extensive line of fiber optic solutions.

If your network requires the performance that only fiber can provide for protocols such as gigabit ethernet, fibre channel or sonet, Molex Premise Networks has the answer. We offer a complete line of fiber optic cables and components to meet your every fiber patching and management requirement. All products are manufactured to the highest standards and are factory tested to ensure they offer dependable, virtually maintenance-free performance.

### CHOOSE MODLINK™ FOR FAST-TRACK FIBER OPTIC SYSTEM INSTALLATION.

Installing fiber-optic systems is quick, easy and cost-effective with ModLink. ModLink plenum-rated ribbon cables (6- and 12-fiber, 62.5u, 50u or single-mode) are factory terminated on both ends with multi-fiber MTP connectors and a built-in protective pulling eye. They are factory tested and shipped with the test results. No special tools required! Simply plug

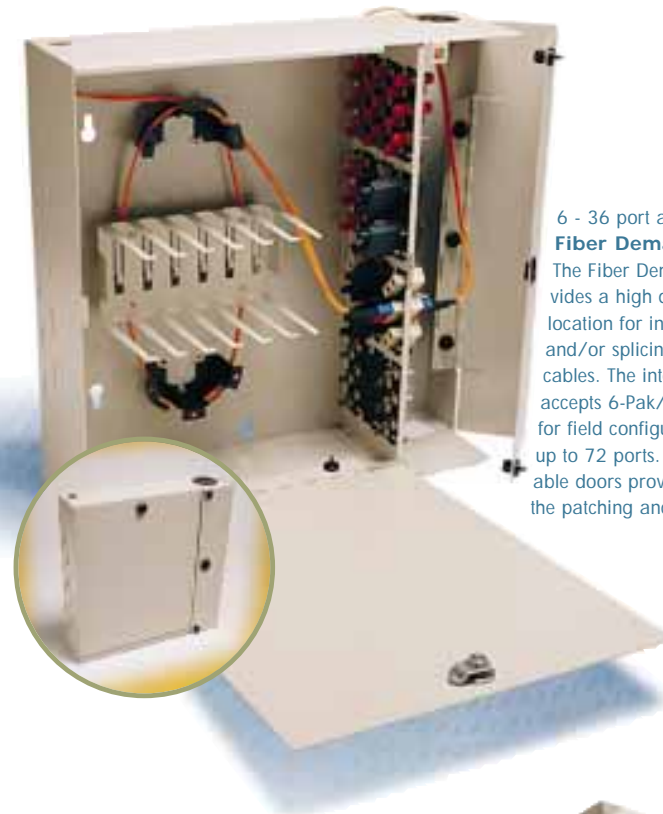
in the cable and the link is operational. ModLink patch cassettes, which are rack



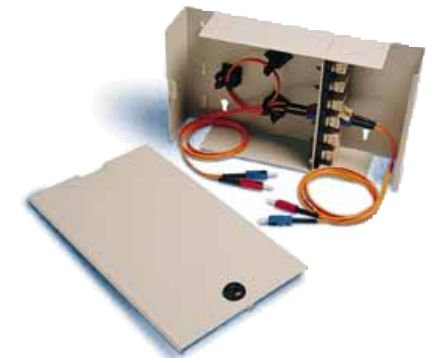
or wall mountable, self-contained fiber-optic patching enclosures, convert the MTP interface to an individual EIA/TIA-568-A standard ST®, MTRJ, LC or SC coupler interface. Cassettes are available in either 6- or 12-fiber versions.

### COMPACT 24-PORT FMS TERMINATION DRAWER TERMINATES, STORES, AND PROTECTS INCOMING FIBER CABLE.

The 24-port FMS Termination Drawer is a 1U configurable rack-mount unit for terminating and storing incoming fiber cable. The front of the drawer slides open to reveal a recessed configurable patch panel that accepts up to four 6-Pak Adapter Plates (sold separately). Up to two Universal Splice Trays can be mounted behind the field-configurable panel, with ample room for additional cable management. The 24-Port FMS is lockable to prevent unauthorized entry.



6 - 36 port and 6 - 72 port **Fiber Demarc Boxes**  
The Fiber Demarc Box provides a high density central location for interconnecting and/or splicing fiber optic cables. The internal panel accepts 6-Pak/Adapter plates for field configuring the units up to 72 ports. Individual lockable doors provide security for the patching and splicing fields.



The wall-mountable **WM-12** enclosure accepts up to six single or three double USO II modules, providing **up to eighteen fiber ports in minimum space**. Modules may be mixed fiber, UTP, STP and coax, making this the most versatile and compact wall-mount enclosure for mixed media. This lockable, 16-gauge steel unit is the recommended solution where a high level of security is required.



The **FLT4 Optical Loss Test Set** is an easy-to-use and inexpensive solution for attenuation testing of multimode systems. The test set consists of a dual wavelength optical power source and optical power meter in a rugged plastic case, complete with ST adapter cap and operation manual.



**Xpress Term® ST Terminations** ensure the best possible fiber optic connector performance.

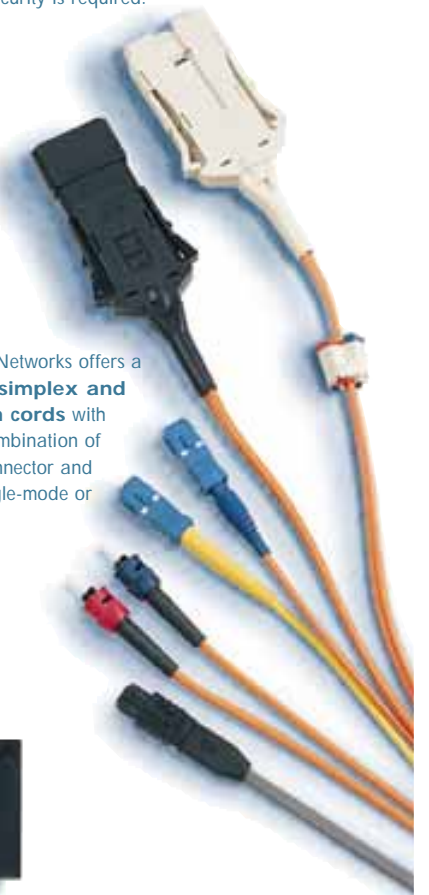


The **LI-24, a configurable, wall-mounted, optical fiber interconnect unit**, accepts up to four 6-Pak plates. Each LI-24 is outfitted with internal fiber management rings and cable ties.

**Our 6-Pak Adapter Plates and Universal Splice Trays** make it easy to field configure the 24-Port FMS Termination Drawer, FMS Plus units, and Fiber Demarc Boxes. The Adapter Plates come loaded with SC, ST®, FDDI, and ESCON adapters.



Molex Premise Networks offers a wide variety of **simplex and duplex patch cords** with virtually any combination of optical fiber connector and any type of single-mode or multimode fiber.



It's all about data integrity.