

We partner with you for the life of your system.



Molex Premise Networks customers and Certified Installers receive extensive training in our New York, Los Angeles, Chicago, and Dallas training centers.

As part of the second largest interconnection product manufacturer in the world, Molex Premise Networks is committed to delivering innovative voice and data communications solutions that safeguard the integrity of your data. To do this, we align ourselves with cabling and installation partners who offer the highest quality products

and services. Then we provide intensive training that ensures they understand how our structured cabling products can best serve your company. Regardless of the Molex Premise Networks products you choose, expect flawless performance throughout the life of your system. And count on us to be there to support you every step of the way.



A highly-skilled Molex Premise Networks Certified Installer will field-test your system to ensure it's properly constructed to meet your networking requirements.

Molex Premise Networks provides free system design support, including Visio drawings, material lists, and CAD product drawings.



**Molex Premise Networks Division
Corporate Headquarters**
8 Executive Drive
Nashua, NH 03051 USA
Ph: 603-324-0200
Toll Free: 800-866-3827
Fax: 978-772-2011
www.molex.com

Latin America
Tel 516 454 6700
Fax 516 454 6705

Western Europe Headquarters
Molex Premise Networks Limited
Network House, Concorde Way
Segensworth North, Fareham,
Hampshire, PO15 5RL
England
Tel +44 (0) 1489 572 111
Fax +44 (0) 1489 559106
www.molexpn.co.uk

Eastern Europe Headquarters
Molex Premise Networks S.P.Zo.o
Ul. Nowelska 6
Warsaw
01-447
Poland
Tel +48 22 36 92 51
Fax +48 22 36 92 55
www.molexpn.com.pl

Asia Headquarters
Molex Premise Networks Hong Kong
2F, Block A Shatin Industrial Centre
5-7 Yuen Shun Circuit
Siu Lek Yuen, Shatin
New Territories
Hong Kong
Tel +852 2637 3759
Fax +852 2647 1082
www.molexpn.com

South Pacific Headquarters
Molex Premise Networks Australia Pty Ltd
86-100 High Street
Melton
Victoria
Australia 3337
Tel +61 3 9747 8322
Fax +61 3 9747 8627
www.molexpn.com.au

The information in this document is subject to change without notice and should not be construed as a commitment by Molex Premise Networks. Molex Premise Networks assumes no responsibility for any errors that may appear in this document.

© Copyright 1999 Molex, Inc., Harvard, MA 01451 USA. Molex is a registered trademark of Molex, Inc. RICI is a registered trademark of Barnes Wentworth, Inc. Printed in USA 0899. 218-131



MOLEX PREMISE NETWORKS WORK AREA SOLUTIONS

For unfailing
network performance,
you need products that
ensure the **integrity**
of your data at the desktop.



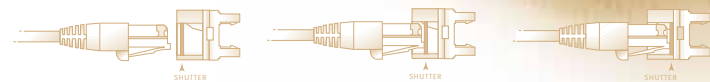
**PREMISE
NETWORKS**
A Division of Molex

It's all about data integrity.

When you're in the market for structured cabling solutions, what do you look for? Electrical performance? Flexibility? Ease of installation? Customer support? Individually, all these issues are important. But it's only collectively that they differentiate a truly great system solution that can meet your bottom-line objective: to install a cabling system that will safeguard your data long term. Because, without data integrity, nothing else matters.

AT MOLEX PREMISE NETWORKS, PROVIDING COPPER AND FIBER SOLUTIONS THAT ENSURE DATA INTEGRITY IS OUR MISSION. OUR COMMITMENT TO THIS MISSION IS EVIDENT IN EVERY ASPECT OF OUR BUSINESS—FROM PRODUCT DESIGN TO TESTING TO EASE OF INSTALLATION TO CUSTOMER SUPPORT.

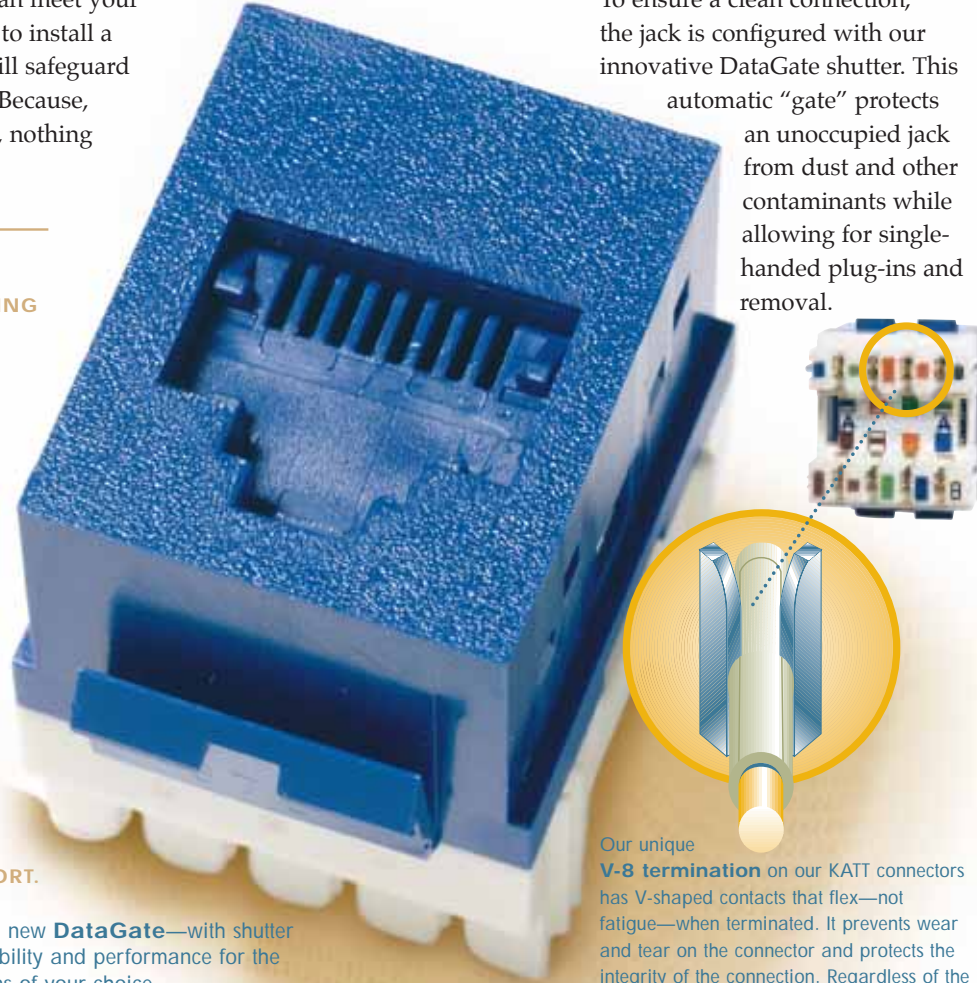
Molex Premise Networks' new **DataGate**—with shutter provides protection, reliability and performance for the protocols and applications of your choice.



PERFORMANCE THAT MATTERS.

Molex Premise Networks products are engineered to exceed your expectations for performance, flexibility, and ease of installation, upgrades and changes. We believe it's our focus on innovation that

makes our solutions remarkable. For example, our RJ-45 DataGate™ jack delivers increased flexibility in a wide variety of applications. It's engineered for use across a broad range of our product line and has the headroom required for today's bandwidth-hungry applications. To ensure a clean connection, the jack is configured with our innovative DataGate shutter. This automatic "gate" protects an unoccupied jack from dust and other contaminants while allowing for single-handed plug-ins and removal.



Our unique **V-8 termination** on our KATT connectors has V-shaped contacts that flex—not fatigue—when terminated. It prevents wear and tear on the connector and protects the integrity of the connection. Regardless of the number of reterminations, you're assured reliable service for the life of the system.

YOUR FLEXIBILITY IN THE WORK AREA BEGINS WITH OUR ABILITY TO SUPPORT CHANGE.

Approximately thirty percent of annual technology budgets at large companies is reserved for moves, adds, and changes. Because Molex Premise Networks products are designed for maximum versatility to meet the ever-changing communications needs of today's office environment, we can help you reduce your technology expenditures. For example, you can move, add and change jacks, labels, outlets and consolidation points with incredible ease in both open and fixed-wall offices—a real timesaver. And, all Molex Premise Networks products are specifically designed to maintain superior connectivity regardless of the number of upgrades and changes you will make.

TOTAL SOLUTIONS FOR CAT 5, CAT 5E, THE NEW CAT 6, AND FIBER.

Network speeds are getting faster every day. To keep pace, you need to future-proof your network. Molex Premise Networks makes it easy. As your single source for high-performance copper and fiber structured cabling products, we have the products you need for virtually any application requirement. Our PowerCat and PowerCat Plus products exceed all Cat 5, Cat 5e and proposed Cat 6 EIA/TIA performance standards for near-end crosstalk (NEXT) and attenuation-to-crosstalk ratio



THE MINI CLOSET

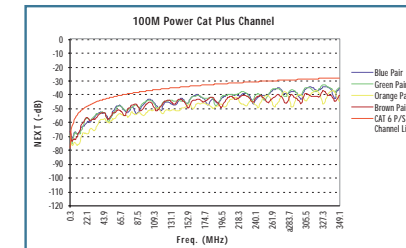
Our unique and versatile **RICI** (Rapid Inter-Connect Interface), which can be mounted above the ceiling, beneath the floor or even under a desk, provides a contamination-free consolidation point. This "mini distribution center" makes changing cabling infrastructure a snap because it allows you to reconfigure multiple channels simultaneously near the work group.



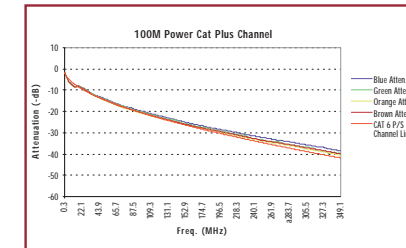
(ACR).

In addition, they exceed the performance specified by TSB-67 for channel and link limits. Molex Premise Networks products maximize your return on investment by extending the useful life of your system.

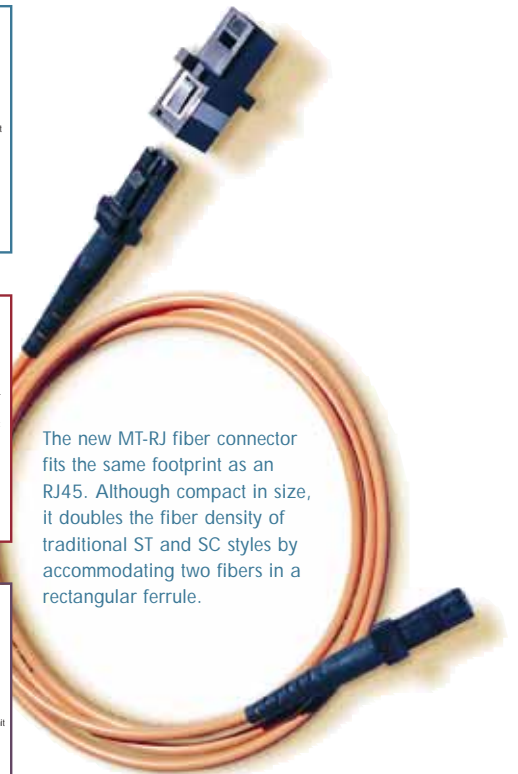
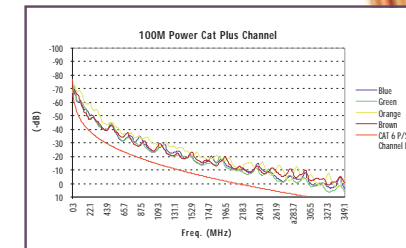
POWERSUM NEXT



ATTENUATION



POWERSUM ACR



The new MT-RJ fiber connector fits the same footprint as an RJ45. Although compact in size, it doubles the fiber density of traditional ST and SC styles by accommodating two fibers in a rectangular ferrule.

No other manufacturer delivers this much flexibility and choice.

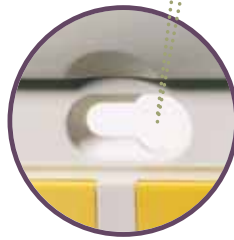
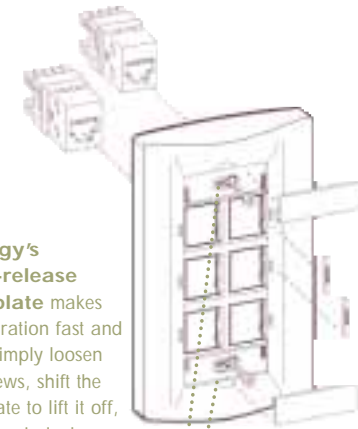
Synergy:

A HIGH-DENSITY MULTIMEDIA SYSTEM THAT SUPPORTS ANY CATEGORY OR APPLICATION.

Because the communications needs of your office change almost daily, you need Synergy. Designed for use in Cat 5, Cat 5e or Cat 6 applications, this field-configurable family of products includes single- and double-gang wall plates, modular furniture outlets, surface mount boxes, grid plate modules, and multimedia mounting systems. When configured with your choice of DataGate, BNC, video, audio, SC, ST or MTRJ fiber connectors, Synergy will meet virtually every wiring requirement.

The low profile, sleek Synergy system can be customized for any application. Wall plates and surface blocks, with one to twelve ports, accommodate your choice of jacks and connectors. Easy-to-read labels keep it all organized. The possibilities are endless!

Synergy's quick-release wall plate makes configuration fast and easy. Simply loosen the screws, shift the wall plate to lift it off, and snap in jacks from the rear. The hinged label cover allows you to insert labels without removing the cover.



Molex Premise Networks offers a complete line of high-quality audio, video, R3 and fiber connectors that ensure data integrity in any installation. Mix and match DataGate jacks and/or BNC, video, audio, SC, ST, or MTRJ connectors in any of our Synergy or USO II products. DataGate jacks are available in a rainbow of colors for easy color coding of applications.



USO II:

EVERY MOVE, ADD AND CHANGE IS MADE FROM THE FRONT.

The USO II multimedia outlet system is a comprehensive group of modular products, which can be easily configured and reconfigured without removing the faceplate bezel. For maximum versatility, our USO II outlets have a three-part design: wall plate bezel, fascia, and jacks. USO II bezels fit all standard US 1 or US 2 wall boxes. USO II modules make it easy to customize the outlets for any UTP or fiber application. DataGate jacks snap in and out of the fascia for easy upgrades and changes in the field. They can be used in the work area with USO II wall plate bezels and workgroup interface products like MMI and MUTO, and can even be used in the communication closet with our USP Patch Panels.



USO II wall plates, bezels, and modules quickly assemble from the front. Each module holds two optical fiber or UTP connectors. DataGate jacks snap into USO II single or dual-module fascias, making it easy to color code your system. SnapZ™ icon labels snap into place for easy-to-see channel labeling.

UNI-FIT MODULAR FURNITURE SYSTEM.

Uni-Fit overcomes the obstacles modular furniture presents to high-performance voice and data communications. This modular furniture outlet has fully adjustable latches that adapt to virtually any furniture system in seconds. Simply attach the base plate to the furniture, snap on the cover, and snap in a USO II module. Each Uni-Fit accommodates up to four voice or data channels and is available in white, almond, black and gray.

SURFACE BLOCKS

Surface blocks are ideal for use where a surface mount is needed in a confined and visible space. Available in one and two-module versions, USO II surface blocks can be mounted on walls or desks using screws or optional magnets. White, almond, black, and gray.



It's all about data integrity.

Look to Molex Premise Networks

for everything you need to
bring it all together.



Molex Premise Networks offers a complete line of test tools, MUTOs, MMIs, cables, and accessories to speed and simplify installation, troubleshooting, and repair of cabling systems. All Molex Premise Networks products are manufactured to the highest standards to ensure reliability and data integrity.

CONSOLIDATION POINTS

The Molex Premise Networks Multi-User Telecommunications Outlet (MUTO) is the ideal solution for high-density fiber or UTP applications. This sleek product, which can be used as either a consolidation point or high-density outlet, holds up to twelve USO II modules (24 channels) and is easily mounted near file servers, hub products and development work areas. For added flexibility, the outlet can be mounted over US 1 single-gang boxes or onto power poles. The MUTO can accommodate up to six angled-fiber modules.

The SLT3™ Tester provides instant identification of most common voice and data problems in USOC, 568A, or 568B cabling systems. The master and remote units separate for easy end-to-end testing of installed cabling. A continuously sequencing LED display immediately alerts you to shorts, opens, reversals and miswires in your cabling system. Simply snap and lock the units together for easy storage when not in use.



Installation Tools

The IDC Punch Down Tool provides a reliable connection at a reasonable cost. Compatible with 110 and Krone connectors, its low-impact force prevents damage to connectors. The scissor-style cutoff gives positive wire trimming, even on older blocks.



MULTI-MEDIA

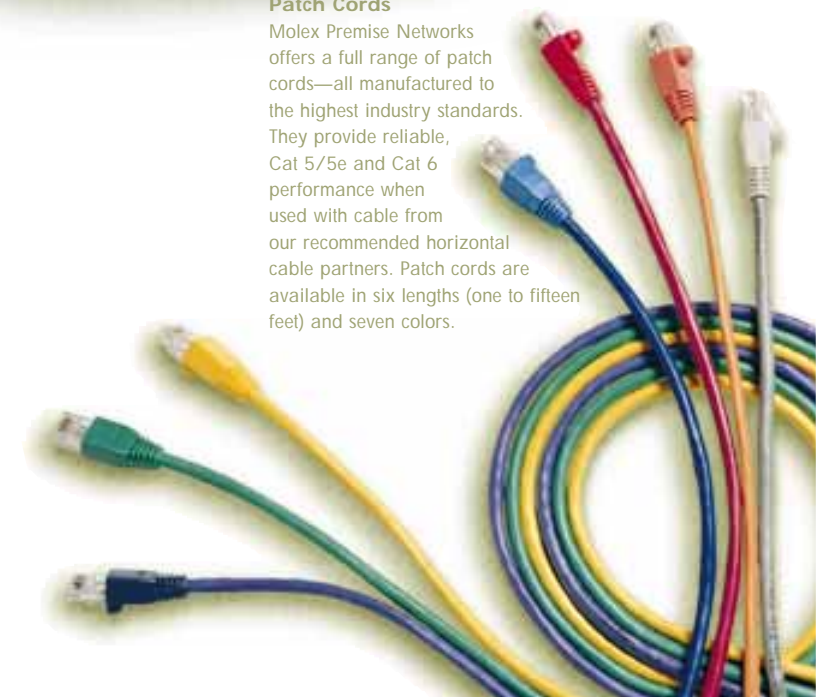
The Multi Media Interface (MMI) is a compact wall-mounted unit for storing and protecting optical fiber. The internal storage spool easily holds 1.5 meters of up to 12 fibers with 900 micron buffers. The MMI-R is a more rugged version of the MMI with a grey powder-coated steel cover that overhangs and protects the lower module positions. Both units accept up to six USO II modules that can be configured using a combination of fiber, UTP, SCTP and coax connectors, placing all outlets in one centrally located unit. This makes MMI an ideal fiber-to-the-desk consolidation point for clustered furniture.



The MMI and MMI-R share a common base that has a special provision for storing and protecting optical fiber. Both units can be wall-mounted on a US1 or electrical box.

Patch Cords

Molex Premise Networks offers a full range of patch cords—all manufactured to the highest industry standards. They provide reliable, Cat 5/5e and Cat 6 performance when used with cable from our recommended horizontal cable partners. Patch cords are available in six lengths (one to fifteen feet) and seven colors.



It's all about
data integrity.