

We partner with you for the life of your system.

As part of the second largest interconnection product manufacturer in the world, Molex Premise Networks is committed to delivering innovative voice and data communications solutions that safeguard the integrity of your data. To do this, we align ourselves with cabling and installation partners who offer the highest quality products and services. Then we provide intensive training that ensures they understand how our structured cabling products can best serve your company. Regardless of the Molex Premise Networks products you choose, expect flawless performance throughout the life of your system. And count on us to be there to support you every step of the way.

WE SUPPORT INDUSTRY STANDARDS.

Because we believe industry standards ensure high-quality products, Molex Premise Networks is an active participant in the formation of codes and standards. When you specify a Molex Premise Networks system, you can rest assured that it meets the latest requirements outlined in standards such as: ISO, ITU-T, IEEE, CSA, EIA, UL, TIA, ANSI, IEC, ATM Forum, ASTM, FCC, NEMA, and many others.

FOR A CERTIFIED INSTALLER NEAR YOU, CALL YOUR LOCAL MOLEX PREMISE NETWORKS OFFICE.



Molex Premise Networks Corporate Headquarters

8 Executive Drive
Hudson, NH 03051 USA
Ph: 603-324-0200
Toll Free: 800-866-3827
Fax: 603-577-8770
www.molexpn.com



MOLEX PREMISE NETWORKS GLOBAL WARRANTY PROGRAM

Protect your
structured cabling system
investment with a warranty that ensures
the long-term **integrity**
of your data.

Western Europe

Molex Premise Networks Limited
Network House, Concorde Way
Segensworth North, Fareham,
Hampshire, PO15 5RL
England
Tel +44 (0) 1489 572 111
Fax +44 (0) 1489 559106
www.molexpn.co.uk

Eastern Europe

Molex Premise Networks S.P.Zo.o
Ul. Nowelska 6
Warsaw, Poland
01-447
Tel +48 22 36 92 51
Fax +48 22 36 92 55
www.molexpn.com.pl

Asia

Molex Premise Networks Hong Kong
2F, Block A Shatin Industrial Centre
5-7 Yuen Shun Circuit
Siu Lek Yuen, Shatin
New Territories
Hong Kong
Tel +852 2637 3759
Fax +852 2647 1082
www.molexpn.com

South Pacific

Molex Premise Networks Australia Pty Ltd
60-78 Abby Road
Melton, Victoria
Australia 3337
Tel +613 9971 7111
Fax +613 9971 7199
www.molexpn.com.au

The information in this document is subject to change without notice and should not be construed as a commitment by Molex Premise Networks. Molex Premise Networks assumes no responsibility for any errors that may appear in this document.

© Copyright 1999 Molex Premise Networks, Inc., Hudson, NH. Molex is a registered trademark of Molex, Inc. Lit no: 218-129 Printed in USA 12/99.

It's all about
data integrity.



PREMISE
NETWORKS
A Division of Molex

It's all about data integrity.

Specifying a structured cabling system that will meet the long-term communications needs of your company is a challenging task given the speed at which technology is changing. It's vital that you install a system that will provide superior electrical performance now with adequate headroom to accommodate future technology. The system must also be flexible to provide unfailing end-to-end performance regardless of the number of moves, adds, and changes you make. And to assure long-term system performance, you need a warranty that will stand behind your structured cabling system, because without data integrity, nothing else matters.

WE WARRANT THE INTEGRITY OF YOUR SYSTEM FOR 20 YEARS!

At Molex Premise Networks, providing copper and fiber solutions that ensure data integrity is our mission. Our commitment to this mission is evident in every aspect of our business—from product design, testing, and ease of installation to customer support and our comprehensive Certified Installer Program. And it's evident in the 20-year warranty you'll receive when you install a Molex Premise Networks structured cabling system. This warranty, which covers system products, applications, and performance, ensures that your

ENJOY **20 YEARS** OF FLAWLESS SYSTEM PERFORMANCE.

- Field verified to exceed TIA-TSB 568-A, 569, 570, 606, IEEE and/or ISO/IEC 11801 standards for UTP and fiber links/channels
- 20-year product warranty
- 20-year system performance warranty
- 20-year application assurance warranty

network will operate flawlessly and support any application designed to the TIA/EIA 568-A standard—now and for years to come.

WE OFFER TOTAL UTP, STP AND FIBER SOLUTIONS FROM THE CAMPUS TO THE DESKTOP.

Network speeds are getting faster every day. To keep pace, you need to future-proof your network. Molex Premise Networks makes it easy. As your single source for high-performance copper and fiber structured cabling products, we have the products you need for virtually any application requirement. Our Cat 5, Cat 5e and Cat 6 jacks and patch panels exceed all EIA/TIA performance standards for near-end crosstalk (NEXT) and attenuation-to-crosstalk ratio (ACR). In addition, they exceed the performance specified by TSB-67 for channel and link limits. Molex Premise Networks products maximize your return on investment by significantly extending the useful life of your system.

INNOVATIVE DESIGN AND ATTENTION TO DETAIL ENSURE SUPERIOR PERFORMANCE AND REDUCE COSTS.

Molex Premise Networks products are engineered to exceed your expectations for performance, flexibility and ease of installation, upgrades and changes. We believe it's our focus on data integrity that makes our solutions remarkable. For example, our RJ-45 **DataGate**

The new **MT-RJ fiber connector** fits the same footprint as an RJ45. Although compact in size, it doubles the fiber density of traditional ST and SC styles by accommodating two fibers in a rectangular ferrule.



The **FMS Plus** is ideal when you need maximum fiber terminations in a minimum of rack space. These configurable patching and/or splicing units are available in seven styles to accommodate between 48 and 144 fibers.

jack always provides a clean connection because the jack is configured with our innovative **DataGate** shutter. This automatic "gate" protects an unoccupied jack from dust and other contaminants while allowing for easy single-handed plug-in and removal. Or



take a look at our new high-density **MT-RJ fiber connector**, which fits the same footprint

Molex Premise Networks' new **DataGate** with shutter provides Cat 6 performance with any product platform you choose.

as an RJ45. Although compact in size, it doubles the fiber density of traditional ST and SC styles by accommodating two fibers in a rectangular ferrule. Our **FMS Plus** rackmount fiber management system is ideal when you need maximum fiber terminations in a minimum of rack space. To ensure that today's high-speed cable is always handled and installed correctly, we've built intelligent cable management into our entire product line.



Campus Environment



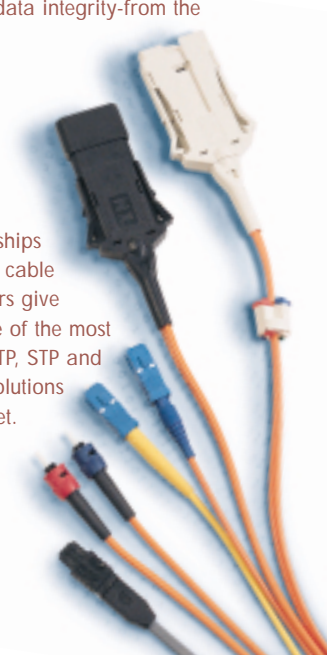
Building Backbone



Horizontal Solution

Our structured cabling solutions ensure unsurpassed performance, reliability, and data integrity—from the campus to the desktop.

Our partnerships with leading cable manufacturers give you a choice of the most advanced UTP, STP and fiber optic solutions on the market.



We warrant the channel performance of your choice.

MOLEX PREMISE NETWORKS OFFERS FOUR WARRANTED CHANNEL SOLUTIONS: BRONZE, SILVER, GOLD, AND PLATINUM. ALL EXCEED WITH AMPLE HEADROOM THE EIA/TIA STANDARDS IN THEIR CATEGORY. YOU CHOOSE THE SYSTEM THAT BEST MEETS YOUR REQUIREMENTS.

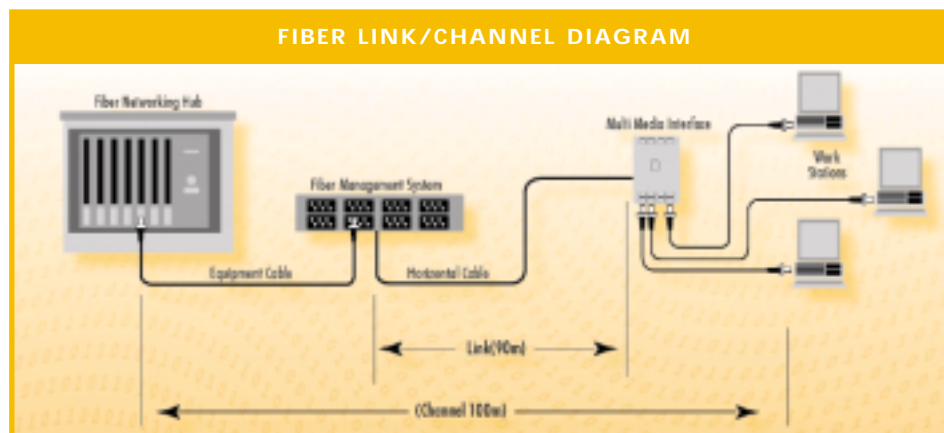
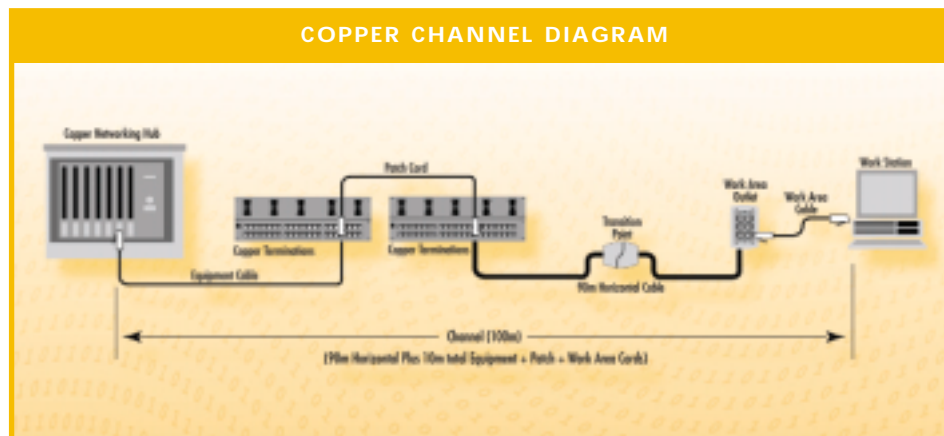
At right are performance graphs of the UTP warranted channels. For similar detail on our STP solutions, please contact your representative.



channel performance solutions



PowerSum ACR -dB@100MHz						
CHANNEL WARRANTY	STANDARDS MIX CONNECTORS/CABLE	LINK	CHANNEL	FASTEST APPLICATION SUPPORTED	PERFORMANCE GRAPHS POWERSUM ACR @ 100MHZ	STANDARDS COMPLIANCE
BRONZE	5E/5	17	16	100 BASE T		EIA/TIA CAT 5 ISO 11801 CLASS D EN 50173 CLASS D
SILVER	5E/5E	20	17	GIGABIT ETHERNET		EIA/TIA 5e ISO 11801 CLASS D EN 50173 CLASS D
GOLD	5E/6	21	17	GIGABIT ETHERNET		EIA/TIA 5e ISO 11801 CLASS D EN 50173 CLASS D
PLATINUM	6/6	29	19	GIGABIT ETHERNET		EIA/TIA CAT 6 ISO 11801 CLASS E EN 50173 CLASS E



Our Certified Installer Program

is clearly second to none.

The Molex Premise Networks Certified Installer Program is considered by industry experts to be the most comprehensive training program of its kind. We've earned this reputation by selecting

only the most qualified installers for the program, training them well, and then holding them to the highest possible standards. This in turn ensures that you receive superior workmanship, outstanding

network performance and data integrity when you specify a Molex Premise Networks cabling system.

Molex Premise Networks customers and Certified Installers receive extensive training in our New York, Los Angeles, Chicago, and Dallas training centers.

INSTALLER EXCELLENCE BEGINS WITH INTENSIVE TRAINING.

To be accepted into the Molex Premise Networks Certified Installer Program, a company must have an experienced network installation staff, an excellent reputation, and proven financial stability. Once accepted, the company must commit to fully participating in our intensive three day training program. Initial training begins with a course in which participants learn how their installation practices can maximize the performance of Molex Premise Networks physical layer components in voice, data, and video networks.

WE REQUIRE ANNUAL RECERTIFICATION AND ONGOING EDUCATION.

Our Certified Installers (CIs) must participate in annual reviews and ongoing training and product education to retain their Molex Premise Networks CI status. We offer an annual CI Engineering Forum that provides our CIs the opportunity to interact with our product management, engineering, and marketing teams. The forum also covers new products, applications, sales tools, training options, and other updates. Our CI Engineering Forums and other training programs are of such high quality that they are approved for BICSI RCDD continuing education credits.



A highly-skilled Molex Premise Networks Certified Installer will field-test your system to ensure it's properly constructed to meet your networking requirements.

YOU'LL RECEIVE SUPERIOR SERVICE AND SUPPORT FOR DECADES.

Once you've specified a Molex Premise Networks structured cabling system, you can sit back and relax. Your CI will design, install and thoroughly test your new system. Then they will submit your system's documentation to Molex Premise Networks for review. We will issue a Certified Cabling System Warranty certificate that insures the performance of your system for 20 years. Your CI will maintain your system—through moves, adds and changes—to ensure it operates as it should throughout the warranty period.

